



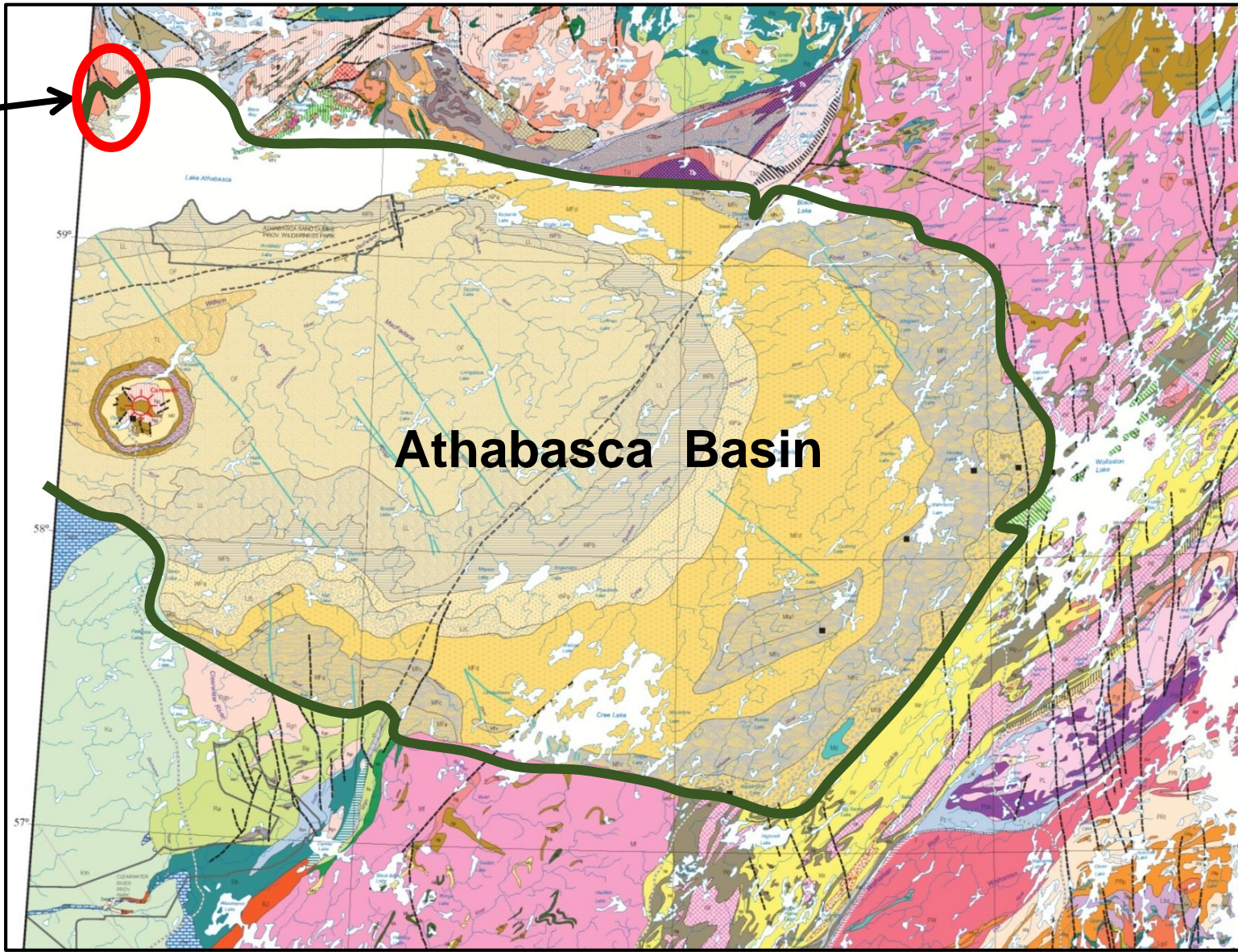
# Northwest Athabasca



September 2017

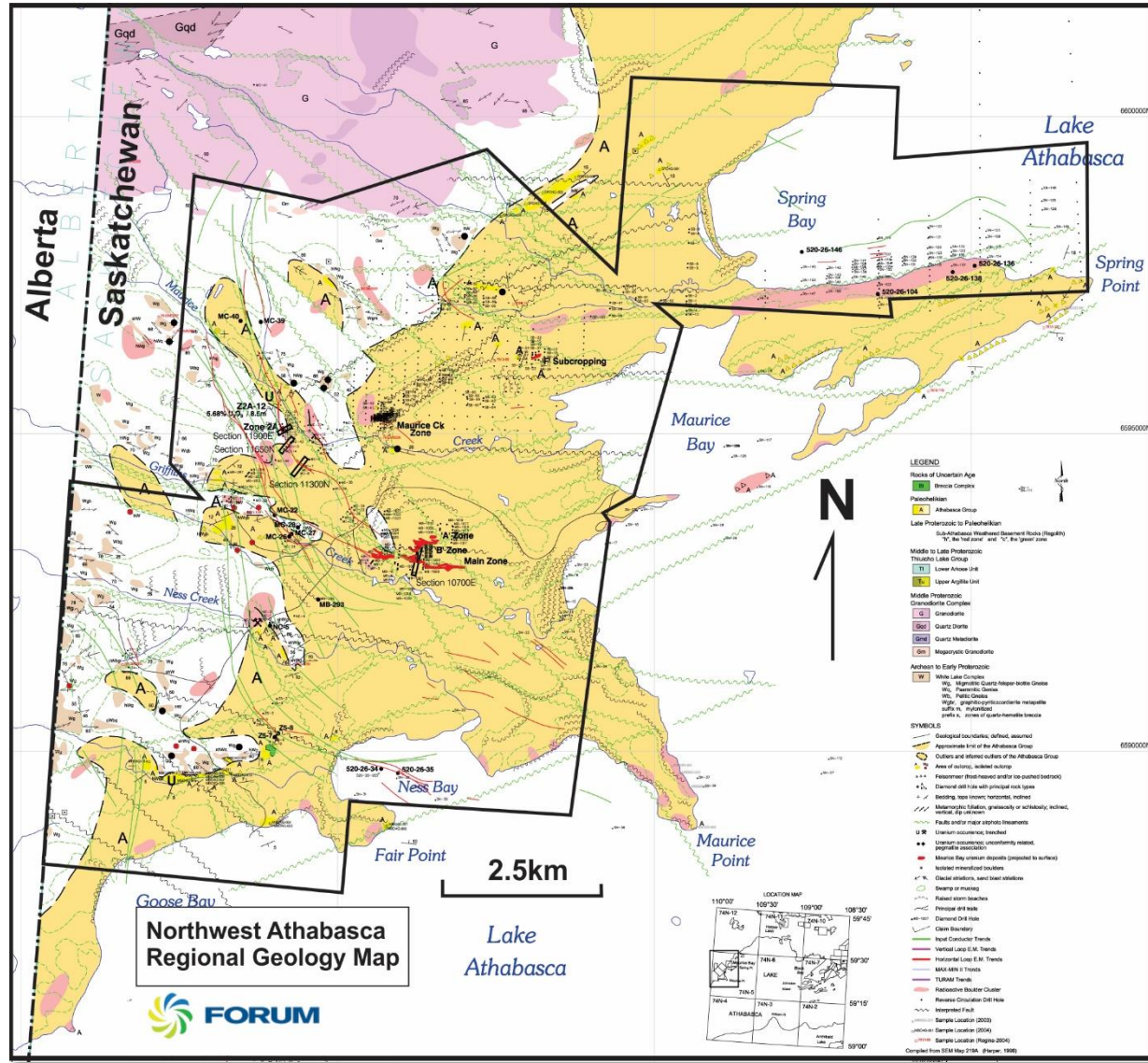


**NWA JV**

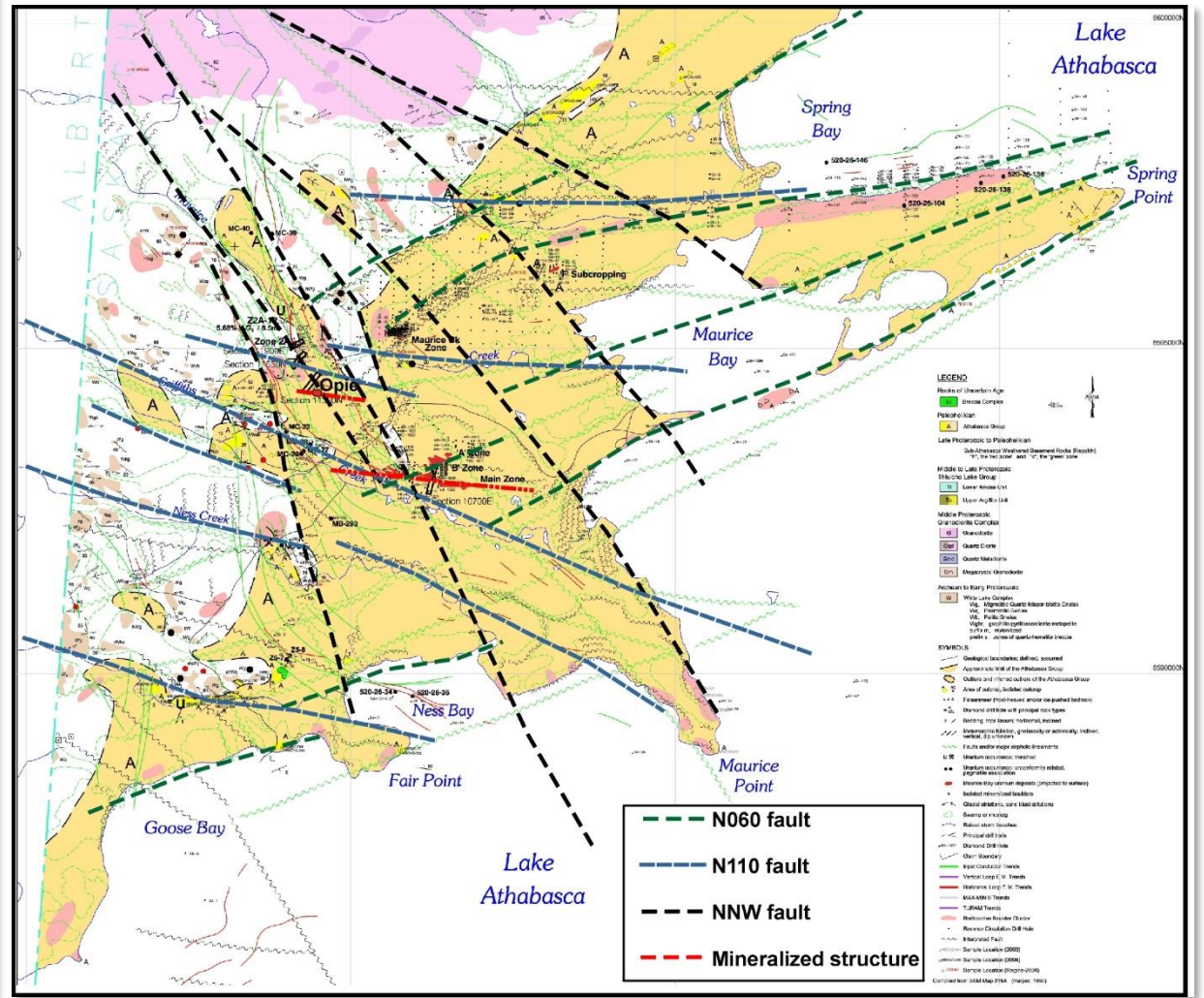




### Geology Map



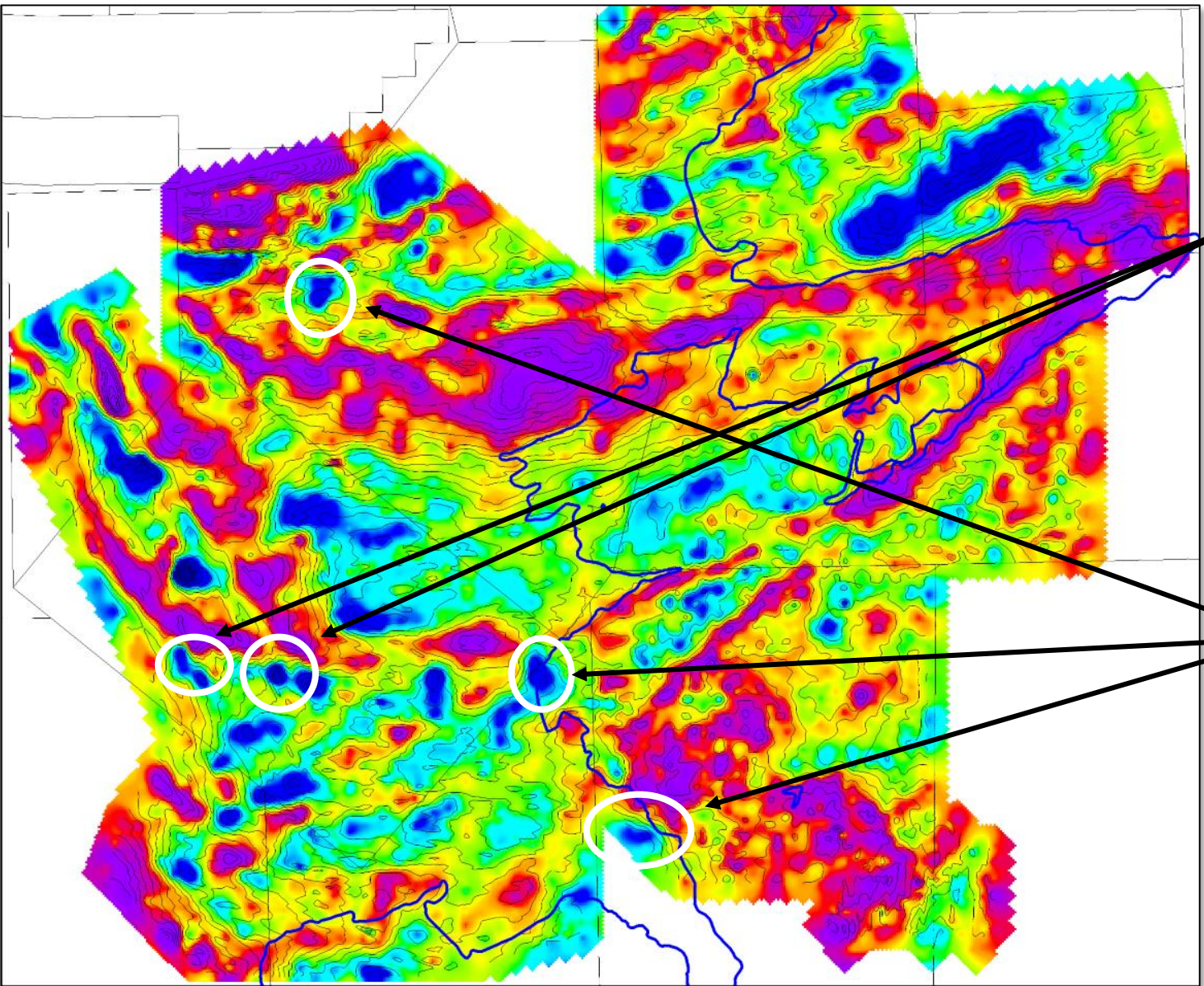
### Geology Map with interpreted structures



Northwest Athabasca Regional Geology Map

- - - N060 fault  
 - - - N110 fault  
 - - - NNW fault  
 - - - Mineralized structure



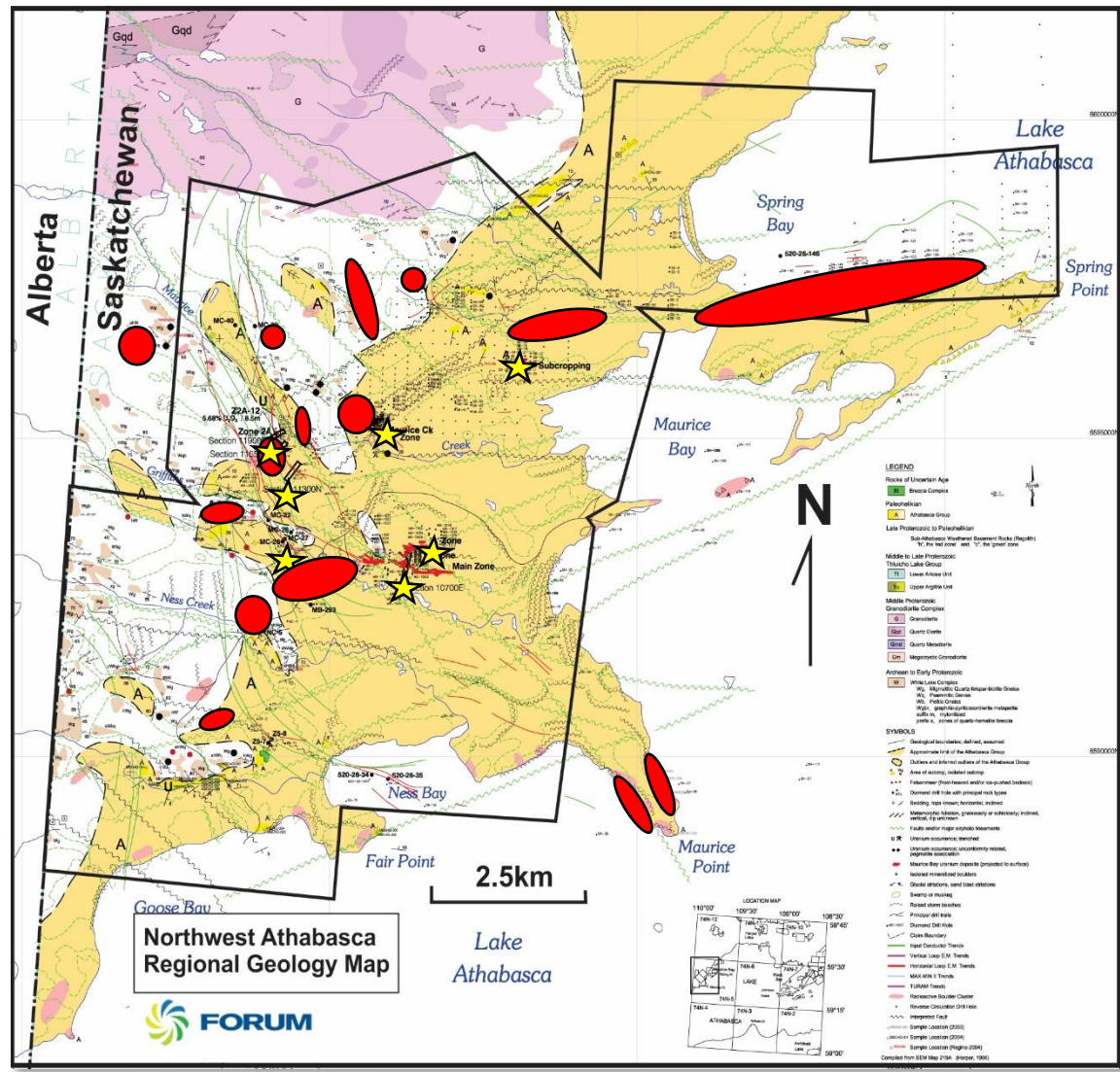


### 2017 Exploration Program

Boron sampling survey over select gravity targets completed in summer of 2017, Otis West and Barney used as control anomalies.

Tested gravity lows with well-defined borders, structural control, and surface expression of historic boulders





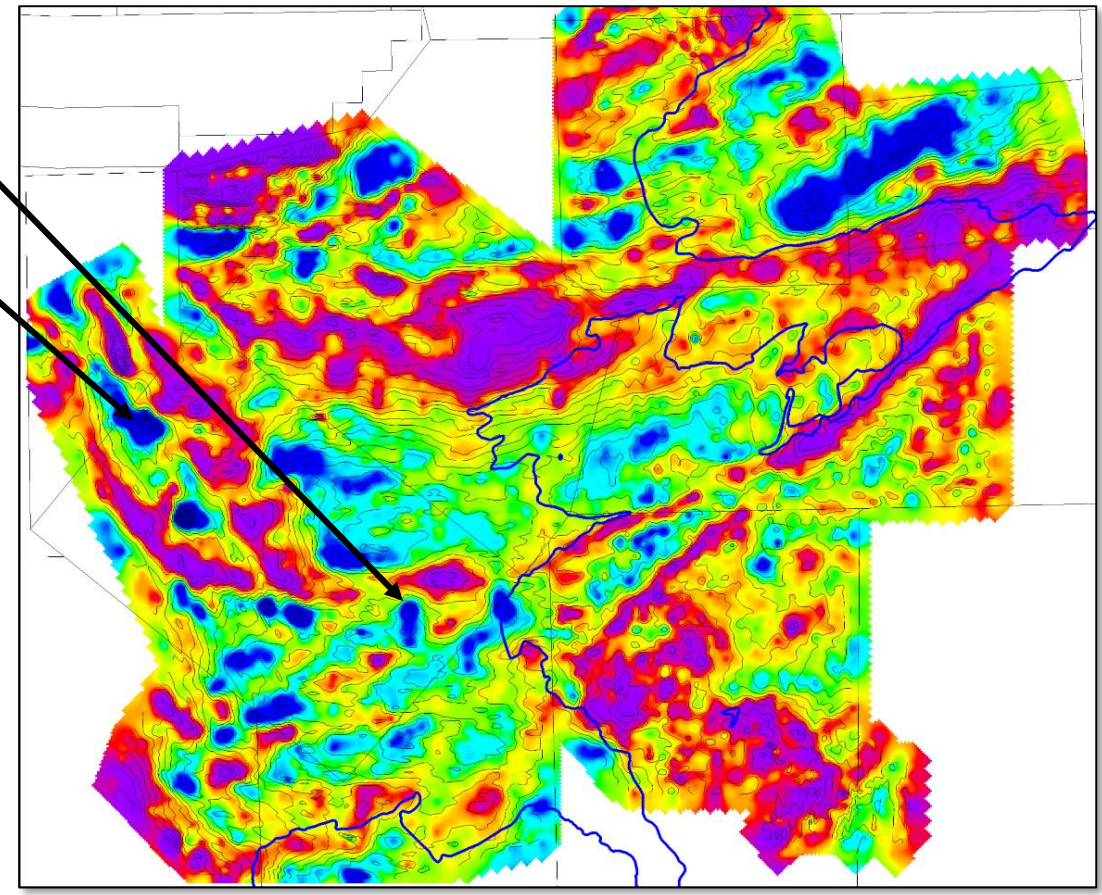
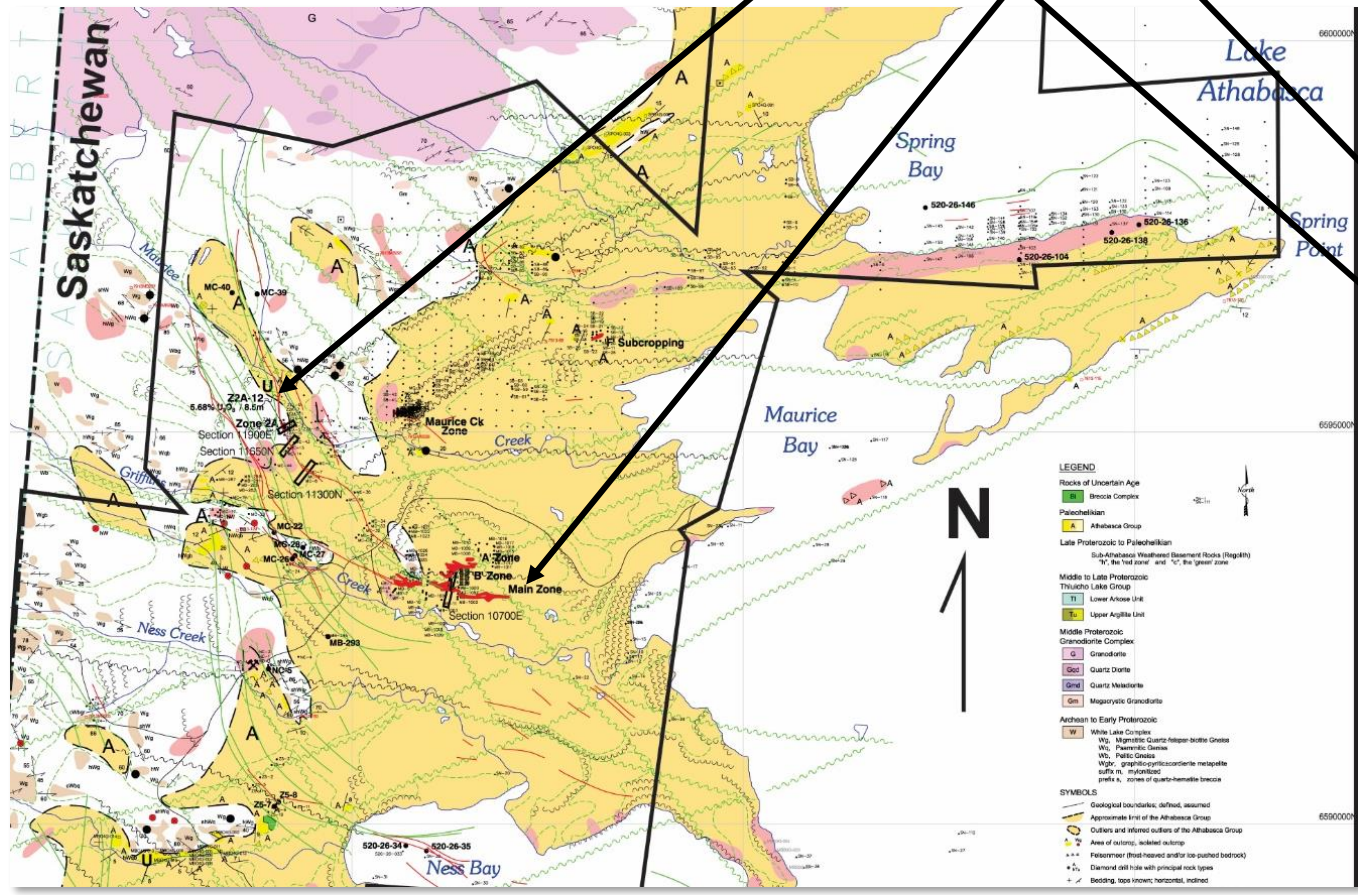
- ★ Known mineralization
- Historic uraniumiferous boulder train

### Historic boulder sampling results

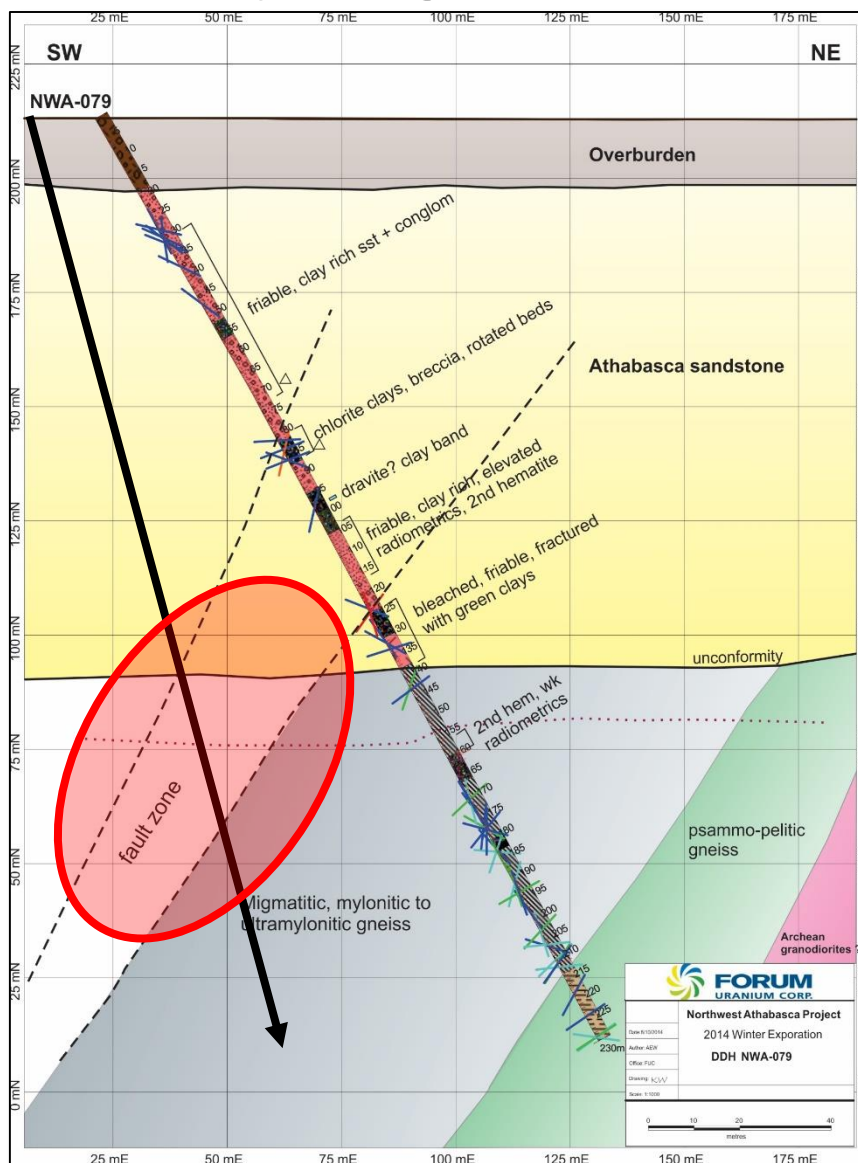
Variable borders of the sandstone (yellow-gold colour) suggest strong structural control of sandstone paleo-valleys. These contacts, in combination with gravity lows and uranium-rich boulder fields delineate future drill targets.



Drill two target areas: Andy and Floyd (Andy has not been drilled, Floyd has one drill hole)



### Floyd Target



**NWA-79 (2014) returned strong alteration, quartz dissolution, tectonics and strong boron anomalies within the sandstones. A second hole is proposed to drill beneath the first to test for unconformity and basement hosted mineralization.**



### Andy Target



Andy is a very strong gravity anomaly associated with the sandstone paleo-valley heading to the northwest. Zone 2A, basement-hosted mineralization is located just to the south and one hole returned 5.68% U<sub>3</sub>O<sub>8</sub> over 8.5m, only 33m down from surface.